

ZBLC KIT[®]

by Prof. Tomas Linkevičius

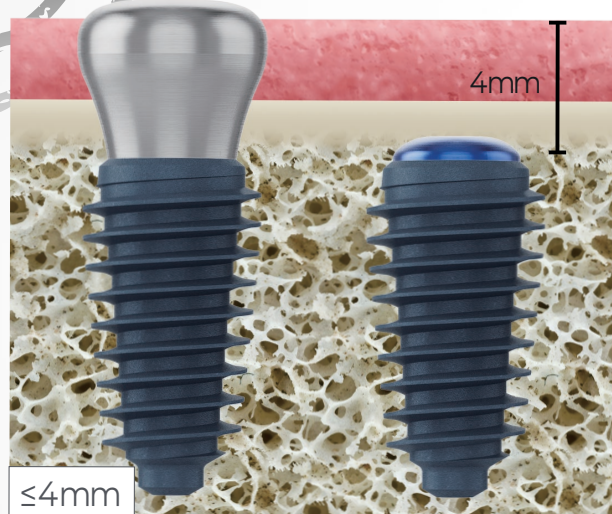
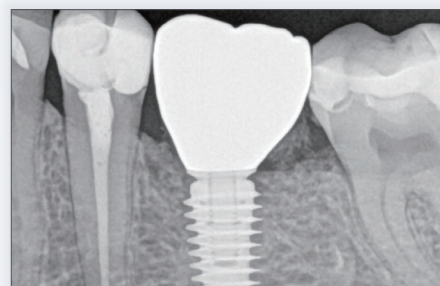


* Introducing ZBLC Kit, that will be changing the paradigm of implant placement

- ZBLC Kit will help you place implants correctly
- ZBLC Kit allows easy selection of MUA and Ti-Base

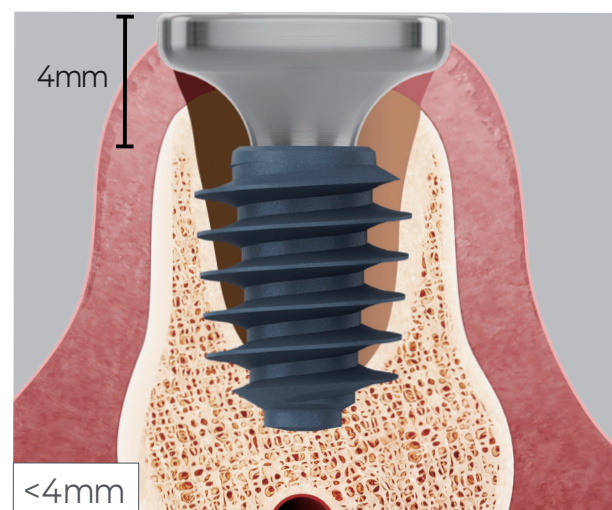


Crestal bone loss can be avoided if the distance from gingival margin to implant platform is 4 mm or more



Inadequate vertical soft tissue and adequate bone height

Subcrestal placement



Inadequate vertical soft tissue and adequate bone height

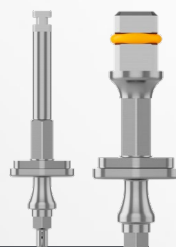
Soft tissue augmentation and epicrestal placement

Easy-to-follow ZBLC



01 HANDPIECE & RATCHET

Helps to place an implant in the correct depth



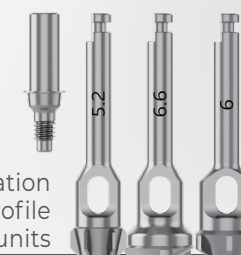
02 GRAFTING PIN

Perfect bone graft can be performed by protecting the inner part of the implant



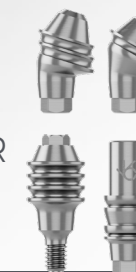
03 BONE PROFILER

The sharp drills allow the creation of an identical emergence profile as the final Ti-Base and multiunits



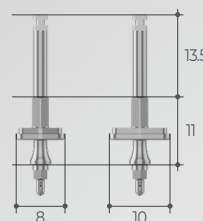
04 MUA & Ti-BASE DETECTOR

Easy selection of MUA and Ti-Base



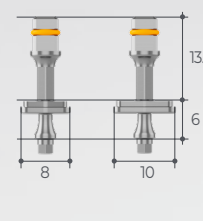
1 Handpiece

- Helps to place an implant in the correct depth
- Measures the width of the extracted gum with a handpiece



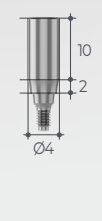
2 Ratchet

- Helps to place an implant in the correct depth
- Measures the width of the extracted gum with a ratchet



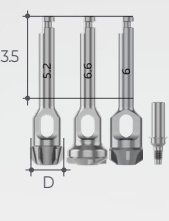
3 Grafting Pin

- Prevents the implant connection from getting clogged with bone



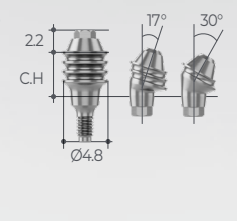
4 Bone Profiler

- Ø5.2 Bone Profiler for Ti-Base and MUA Straight
- Ø6.6 Bone Profiler for MUA Angle 17°
- Ø6 Bone Profiler for MUA Angle 30°



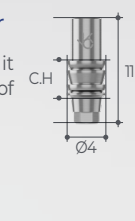
5 Multi-unit Detector

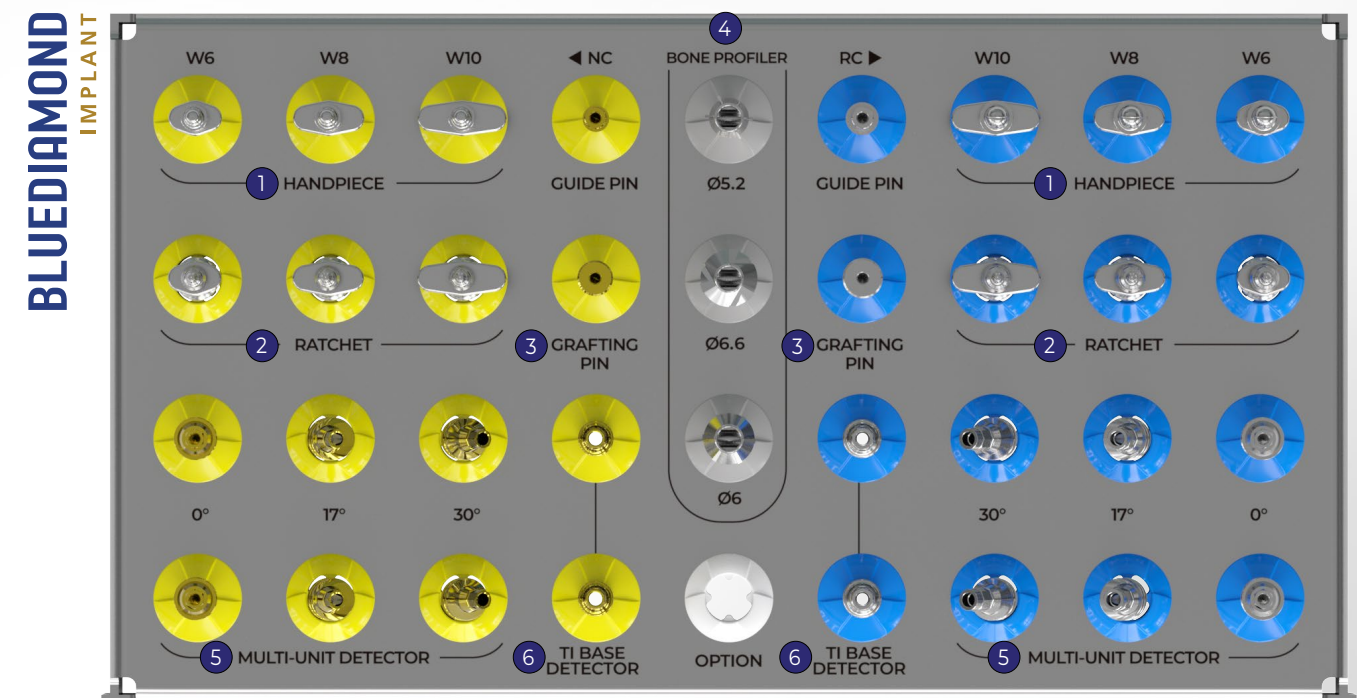
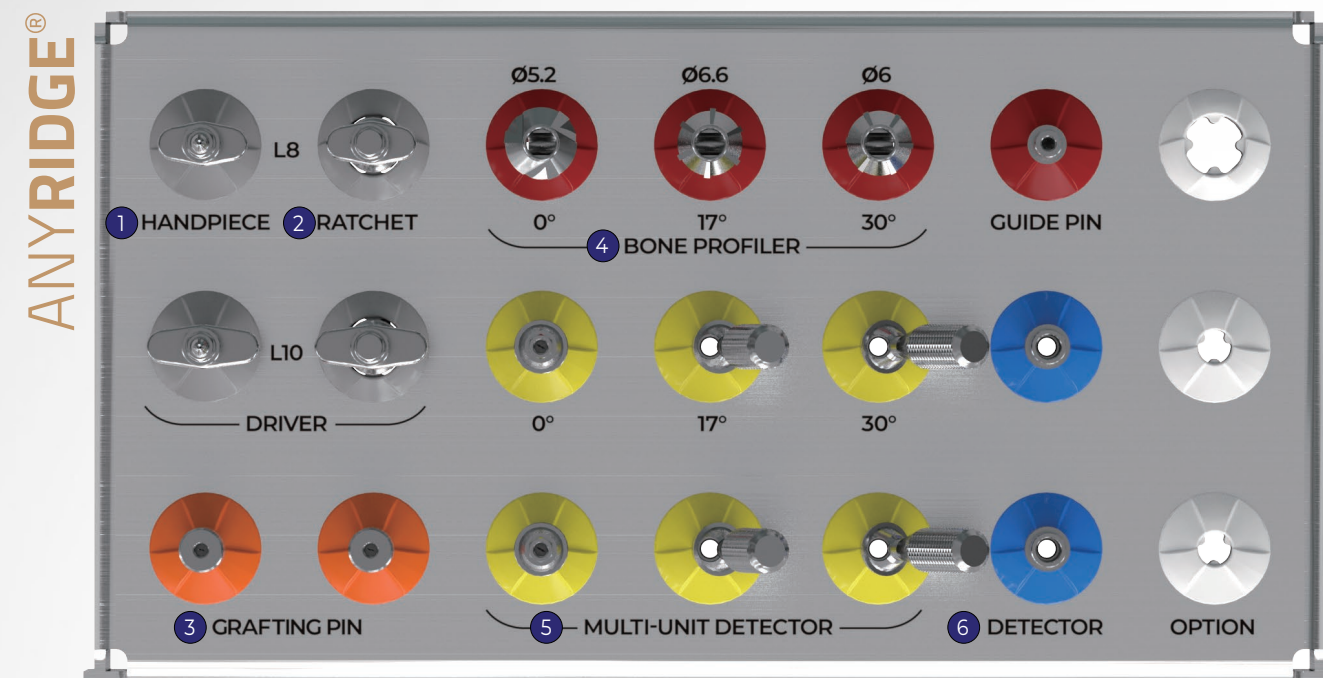
- Marked by cuff height, it makes the selection of abutment easy



6 Ti-Base Detector

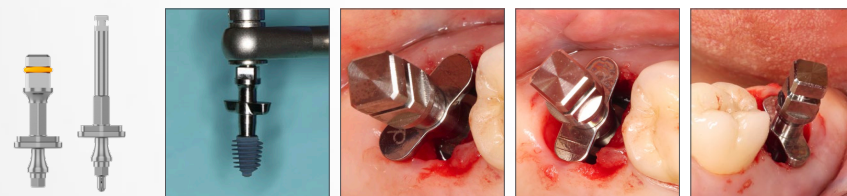
- Marked by cuff height, it makes the selection of abutment easy





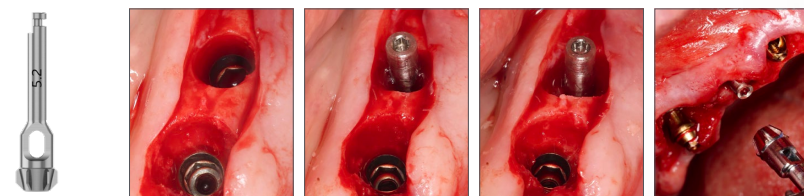
Clinical Case

Handpiece & Ratchet



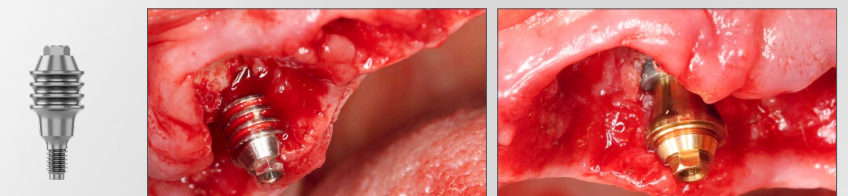
Studies show that the implant depth and the soft tissue volume plays a major role in ensuring marginal bone stability. The "Zero Bone Loss Concept" is supported by the correct implant depth and tissue thickness, yielding long-term predictable outcomes. The handpiece and the ratchet inside the kit have a clear 4mm stop, achieving the minimal implant depth required.

Bone Profiler



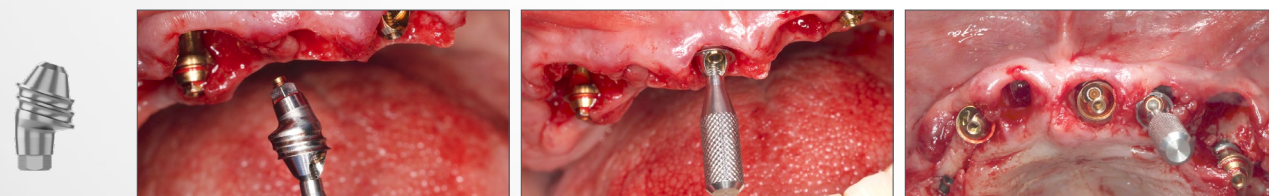
Why face early bone loss and screw loosening? - the problem is in the cortical compression. For a predictable final restoration, you should eliminate the bone around the implant platform. This Unique ZBLC bone profiler will help you eliminate minimum amount of the surrounding bone, reflecting the final abutment angulation. It guarantees ZERO bi-cortical compression and 100% seated restoration.

Multi-unit Detector (Straight)



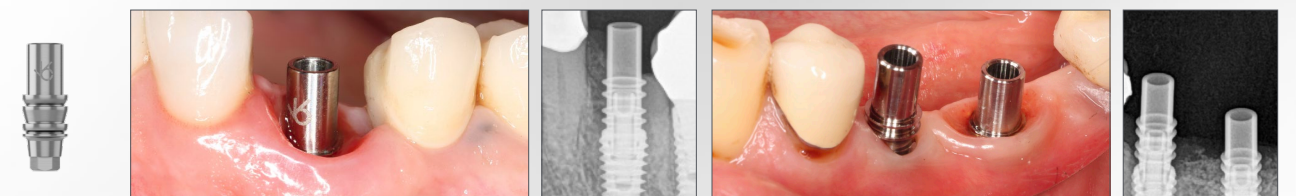
Mult-Unit detector allows you to select correct height of MUA, which will have ZERO cortical compression and is keeping the balance between Zirconia and MUA height. This concept creates maximum adhesion between your soft tissues and restoration.

Multi-unit Detector (Angle)



The Mult-Unit detector (Angle) allows you to have ZERO cortical compression with full arch solution protocol and keeps the balance between Zirconia and MUA height. This concept creates the maximum retention between the soft tissues and full-arch restoration. Furthermore, it helps you identify the correct angle of MUA, making the insertion of multi-unit very easy!

Ti-Base Detector



There are numerous factors affecting the success of a dental implant treatment. One of the most important factor is implant depth, followed by stability of the connection. Studies have shown that the connection of AnyRidge is stable enough for the implant to be placed over 2mm below the crest. Following potential deeper implant placement we can keep ZBLC and avoid soft tissue graft. Ti-base detector allows you to identify the correct depth of the implant following "ZBLC" and enjoy predictability of restorative treatment.

REV.02