

# AccuFab-L4D/L4K 3D Printer

Lit Up For Dentistry



# AccuFab-L4D/L4K

Large-format Dental 3D Printer

AccuFab-L4D/L4K is the latest addition to the SHINING 3D family digital solutions. It is a large-format dental 3D printer developed completely in-house by SHINING 3D to make 3D printing solution more accessible to everyone. It brings users an exceptionally unique printing experience with its features like light-weight, large print size and user-friendly operation.



## Connecting the Future

### Link Aoralscan with AccuFab

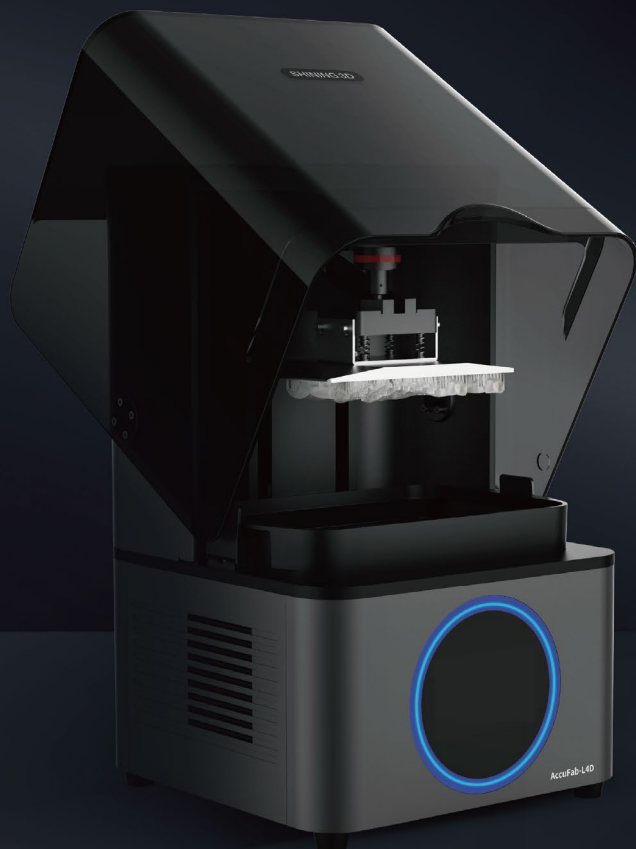
SHINING 3D intraoral scanner, 3D printer and dental material ecosystem provides exceptional experience in digital dentistry.

### AccuDesign

Life-time free upgrade model creator software that comes with AccuFab-L4D/L4K.

### Dental Cloud

SHINING 3D's cloud data platform enables data transmission, making it convenient for data transfer and communication between clinics and dental labs.





# Unparalleled Accuracy

## Accurate Precise

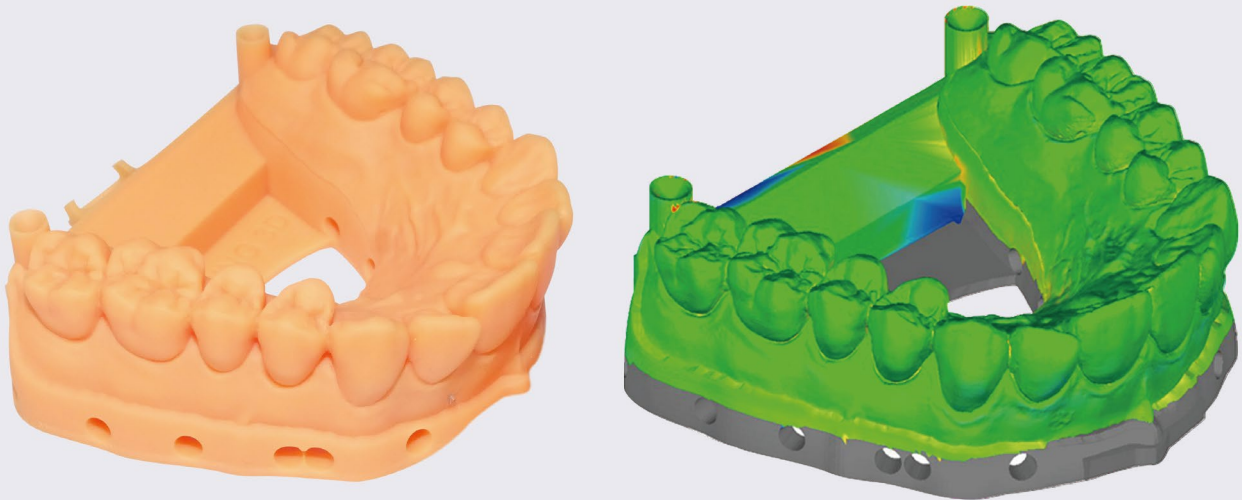
Over 96% of the surface points fits within  $\pm 0.1\text{mm}$

## Outstanding Uniformity

High luminance uniformity achieves up to 90%

## Beyond the Limits

Provides not only the possibility to obtain features smaller than a pixel, but also superior surface finish.

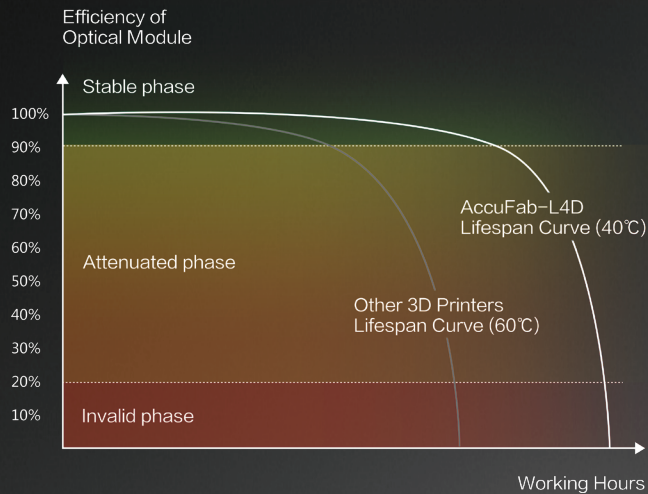




## Large Print Size, 4K Resolution

192\*120mm printing size and 4K resolution satisfy the demands of users for efficiency and details.





# Reliable Performance

## Industrial Grade Optical

High quality optical module with long-life components

## State-of-the-Art Robustness

AccuFab-L4D/L4K's 5 million layers tested in real dental clinic condition provides state-of-the-art

## District Cooling System

DCS (District cooling system) maintains the temperature of working screen under 40°C, while extending the 3D printer lifespan significantly.

# Professional Dental Software

## Plug and Play

Guided interactive operation provides gentle learning curve

## Free Updates

Push update of software and material packages

## Accuracy Calibration Wizard

Step by step guide for accuracy calibration







# Open Material System

SHINING Dent offers a wide range of materials for dental 3D printing applications, including splints, dentures, crowns & bridges, dental models, surgical guides, and more. There are currently 13 resins available for different applications to meet users' needs.

Additionally, SHINING 3D partners with industry-leading brands in dental materials, providing more possibilities and flexibility in material selection.

Please note that some partners are still undergoing validation progress.

keystone  
INDUSTRIES

Graphy

SWISS SAREMCO

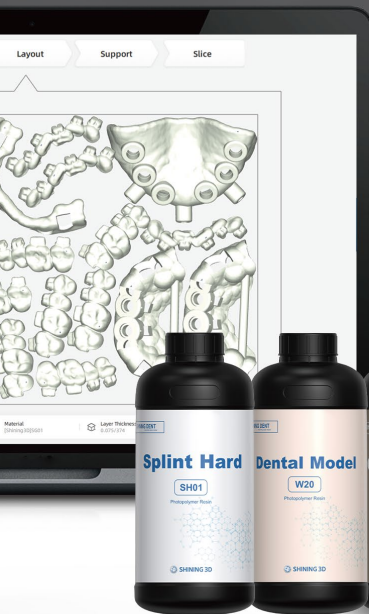
NextDent

DETAX

PacDent  
Passion for Excellence

BEGO

pro3d  
medical



# TECHNICAL SPECIFICATIONS

## AccuFab-L4D/L4K

Printer Size	360 x 360 x 530 mm
Printer Weight	about 19 kg
Print Volume (x/y/z)	192 x 120 x 180 mm
Resolution	3840 x 2400(4K) Px
Print Speed	10-50 mm/h (depends on layer thickness and materials)
Layer Thickness	0.025/0.05/0.075/0.1 mm
Accuracy	± 50 μm
Connectivity	USB/Wi-Fi/Ethernet

\*Notice: SHINING 3D reserves the right to introduce modifications or alterations to any of the specifications and images used in this document.